

```
appVersion(4) = "0.99.6884.37264"
```

$$D(t, y, k) := \begin{bmatrix} \frac{k_1 \cdot y_1 \cdot y_2}{k_2 + y_2} \\ -0.75 \cdot \frac{k_1 \cdot y_1 \cdot y_2}{k_2 + y_2} \end{bmatrix}$$

```
k := stack(0.3, 10-6)  AbsTol := 10-4  RelTol := 10-4
```

```
y0 := stack(0.05, 5)  tmin := 0  tmax := 20  N := 100
```

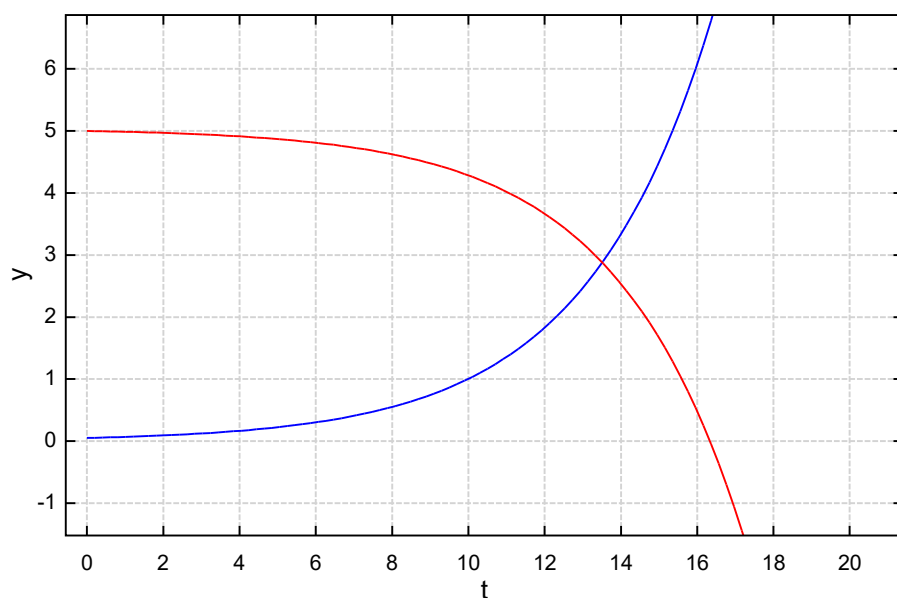
```
res := rkfixed(y0, tmin, tmax, N-1, D)
```

```
res := Rkadapt(y0, tmin, tmax, N-1, D)  res := rkm9mka(y0, tmin, tmax, N-1, D)
```

```
res := mk521fa(y0, tmin, tmax, N-1, D)  res := rkm9mkn(y0, tmin, tmax, N-1, D)
```

```
res := mk521fn(y0, tmin, tmax, N-1, D)  res := rkm9st(y0, tmin, tmax, N-1, D)
```

```
T := col(res, 1)  Y1 := col(res, 2)  Y2 := col(res, 3)
```



```
{augment(T, Y1)
 {augment(T, Y2)
```